



your resource for Affordable Housing



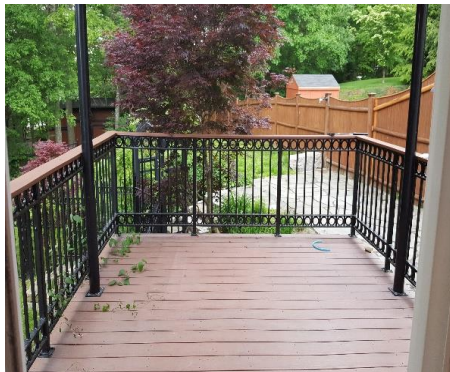
AFFORDABLE RESALE

Stockwell Farms
10A Fitzgerald Lane
Southborough MA 01772

Sale Price: \$208,080
Duplex
3 Bedroom
1.5 Bath
Size of Home (sq ft): 1839
Year Built: 1998



Lovely Duplex in a great neighborhood in Southborough. Beautifully landscaped fenced in yard with a nice deck. Hardwood floors and granite countertop are just some of the amenities this home offers



Why rent when you can own this home on a moderate income..Call for details!!

For program information:

Karen Morand

(978) 235-5595

karen@mcorealtyservices.com

Visit our website:

MCOHousingServices.com

*Sign up for future offerings
and available listings.*





your resource for Affordable Housing



**Stockwell Farms
10A Fitzgerald Lane
Southborough MA 01772**

Affordable price with great amenities!

Unit Information

# of Bedrooms:	3
# of Bathrooms:	1.5
Parking:	1 Car Garage
Sq. Ft.:	1839
Heating:	Forced Hot Water with Oil
Appliances:	Dishwasher, Range, Microwave
Estimated Annual Taxes	\$2,750 / Year

Eligibility Criteria

- | | | |
|------------------|----------|----------|
| 1. Income Limits | 1 Person | \$47,600 |
| | 2 Person | \$54,400 |
| | 3 Person | \$61,200 |
| | 4 Person | \$68,000 |
| | 5 Person | \$73,450 |
| | 6 Person | \$78,900 |
2. Asset Limits @ \$75,000
3. Must be first time homebuyer
(exceptions may apply)

Please call for more information

Unit available on a first come first serve basis

Great opportunity for a moderate income family in a nice community

For program information:
Karen Morand
(978) 235-5595
karen@mcorealty.com

Visit our website:
MCOHousingServices.com
*Sign up for future offerings
and available listings.*

