

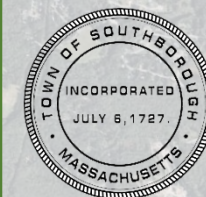
MASTER PLAN - Update

Town of Southborough

VISIONING OPEN HOUSE

Public Input

November 7, 2019



Protection of Open Space/Green Initiatives



- ▶ Allocate resources to start posting and enforcement of dog policies
- ▶ Keep trails free of dog poop
- ▶ No balloons!
- ▶ Walking trail around golf course
- ▶ Restart the recycling committee
- ▶ Control poison ivy along roadways – more cutting!
- ▶ Connected trails
- ▶ Kayaking on reservoirs
- ▶ Paved walking track around Mooney Field (about 4 mile including sidewalks)
- ▶ Repair, upgrade existing sidewalks – roads are hazardous for walkers
- ▶ What is difference between 4 conservation priorities – lowest to highest (on open space map)
- ▶ More beautiful native plants
- ▶ Clean up dump at Breakneck!
- ▶ Off-road biking!
- ▶ Better management of town open space
- ▶ Connected trails
- ▶ Removal of invasives
- ▶ Enforcement of conservation restrictions
- ▶ Allow dogs and bikes on all trails



Accessibility and Connectivity



- ▶ Sidewalks, sidewalks, sidewalks ✓✓✓✓✓
- ▶ Connect schools (Neary, Woodward, Trottier, St. Marks) and neighborhoods (Ledge Hill) to downtown with sidewalks and bike paths
- ▶ Connect medical center (Newton Street) and senior center to downtown with sidewalks
- ▶ Last mile transportation from T-station to industrial/office parks
- ▶ Sidewalks on Parkerville south side
- ▶ Bike lanes!
- ▶ Repair existing sidewalks, add additional walkways
- ▶ Sidewalks, bikeways over reservoirs
- ▶ Connect center village with Southborough Center shopping plaza – sidewalks on 85
- ▶ Public transport from T-station to business parks
- ▶ Sidewalks across causeways & route 9
- ▶ Parking areas on Reservoir Trail
- ▶ Walking trails so adults can exercise
 - ▶ Ditto around Mooney field
- ▶ Small bus for senior center to transport residents who no longer drive to functions, voting, medical, shopping
- ▶ Bike infrastructure is lacking! It could be a great place bike and attract customers to local businesses
- ▶ Is the train station in the right place given environmental concerns, i.e. Sudbury River? It attracts many riders from as far away as Grafton, many from Westboro, etc. Should it be closer to Westborough? (more inconvenient for me though)
- ▶ Look into having a shuttle bus to the train or maybe getting together with Marlboro to have their shuttle stop at 85/30 intersection
- ▶ Commuter rail is not public transit
- ▶ Real public transit needed for all
- ▶ Rail trail – Fayville downtown



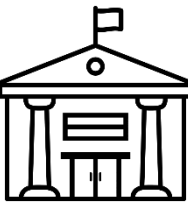
Housing



- ▶ Diversity in housing in the right neighborhoods. Apartments/town-houses
- ▶ Ray Hokinson (sp?) – 10 Main Street
 - ▶ “In previous Master Plan feedback, Town Center residents used the term diverse housing in the “English definition,” meaning varied, which is what we have. Different houses, different size lots, and historic. Not the modern planning development definition of diverse. Diverse in the Town Center is what we already have! Not multifamily and overlay districts.”
- ▶ Housing options needed for seniors, young starters, singles, etc., etc.
- ▶ Multi-family and duplexes
- ▶ Affordable not subsidized senior housing. Widow forced to remain in five bedroom house.
- ▶ Single family homes.
- ▶ Love the way the Town looks. Keep Southborough beautiful.
- ▶ Mixed use housing
- ▶ Options for residents to “age in place.”
- ▶ See Housing Production Plan
- ▶ More density allowed. Not all will desire it but new should have options. Neighborhood diversity.
- ▶ Look at town land properties to renovate house low income.
- ▶ Teachers and municipal employees should be able to afford to live here! More mid-level options.
- ▶ Yes! More senior housing near or on Newton Street.
- ▶ Smaller single family. We don’t need 5 acre lots for McMansions
 - ▶ Yes! ✓
- ▶ Halfway housing; temporarily displaced



Sense of Community



- ▶ Vibrant town center
- ▶ Town “common” or place to organize community events
- ▶ Multi-generational events/meeting places
- ▶ Value our historic assets
- ▶ Park Street extension connects to a large neighborhood (McNeil..._ using this extension expands the Town Center ease of access
- ▶ Bring business to downtown to keep the “locals” local
- ▶ Acquire land behind pizza place for wastewater treatment/parking/open space
- ▶ Finish the National Register Historic District
- ▶ Build on our strengths. Don’t try to be “just like” other towns.
- ▶ Intergenerational community center - fully functioning, multiuse, comprehensive
- ▶ Revitalize the historic Downtown.
- ▶ Update the DBVD zoning
- ▶ UNESCO eligibility
- ▶ Recruit historical architect (volunteer)
- ▶ Continued Improvements to golf course
- ▶ A good pub in Downtown Southborough
- ▶ Sports center
- ▶ Open school gym’s for use of basketball courts



Commercial Diversity, Public Services



- ▶ Transfer station – redesign traffic flow or eliminate doubling around the stop at recycling and swap shop
 - ▶ Control children under 12 in swap shop
- ▶ Actively attract businesses to commercially zoned areas



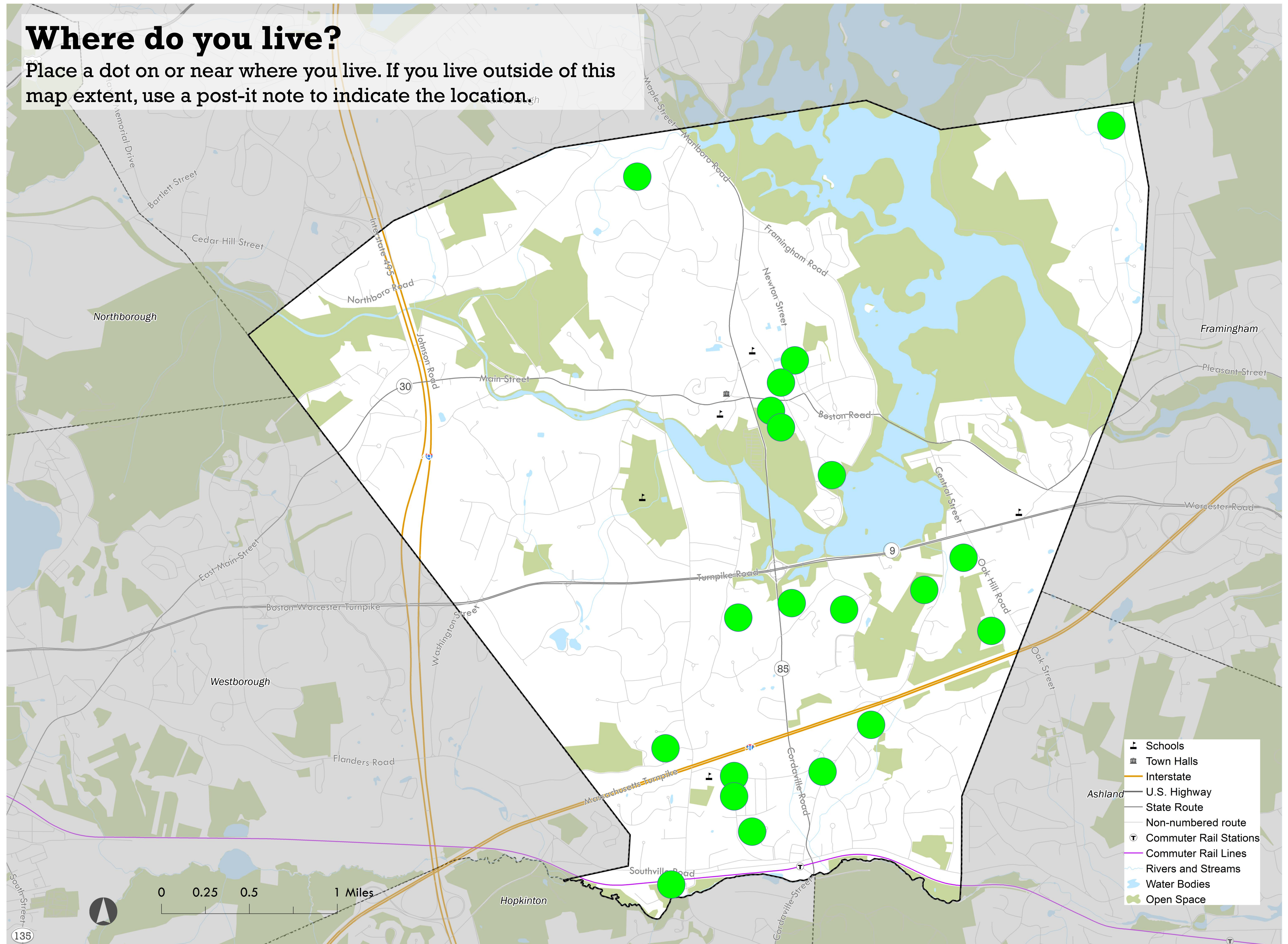
Share your Big Ideas!

- ▶ Hot air balloons
- ▶ Make Southborough a real village with a vibrant downtown with small scale/local restaurants and businesses. Create a place for the community to come together (young and old). Create a walkable village center connected to schools, etc.
- ▶ More tree and open space maintenance
- ▶ Especially where dead trees hang out over wires/roads
- ▶ Where is our cultural center?
- ▶ Apply for grants!
- ▶ Larger outdoor stage for summer concerts where the people can sit in the shade.
- ▶ Downtown needs beautification and a nice coffee shop!
- ▶ More open space.
- ▶ Connect our awesome trails to the Bay Circuit Trail.
- ▶ Install electric car charging stations around town.
- ▶ (Town does not have to pay \$. Work with local utility to fund project!)
- ▶ Complete sidewalks from library to Cordaville on Route 85.
- ▶ Finish sidewalk on Route 9 from White's Corner to Westborough!
- ▶ Pedestrian overpasses for Route 9 and more sidewalks.
- ▶ More sidewalks – and repaired sidewalks. The roads are not the safest places for walking. Also the crowning of roads throws off the bode as one side is always lower. Body alignment is a problem for regular walkers and runners.



Where do you live?

Place a dot on or near where you live. If you live outside of this map extent, use a post-it note to indicate the location.



Where do you work?

Place a dot on or near where you work. If you work outside of this map extent, use a post-it note to indicate the location.

The map displays the Greater Boston area, including surrounding towns and cities. Blue dots are placed on the map to indicate where people work. The dots are concentrated in the central and eastern parts of the map, particularly around the Boston area and the surrounding suburbs. A scale bar at the bottom left indicates distances from 0 to 6 miles. A legend at the bottom right identifies the following features:

- Major Roads
- Commuter Rail Stations
- Commuter Rail Lines
- Rivers and Streams
- Lakes and Ponds
- Open Space

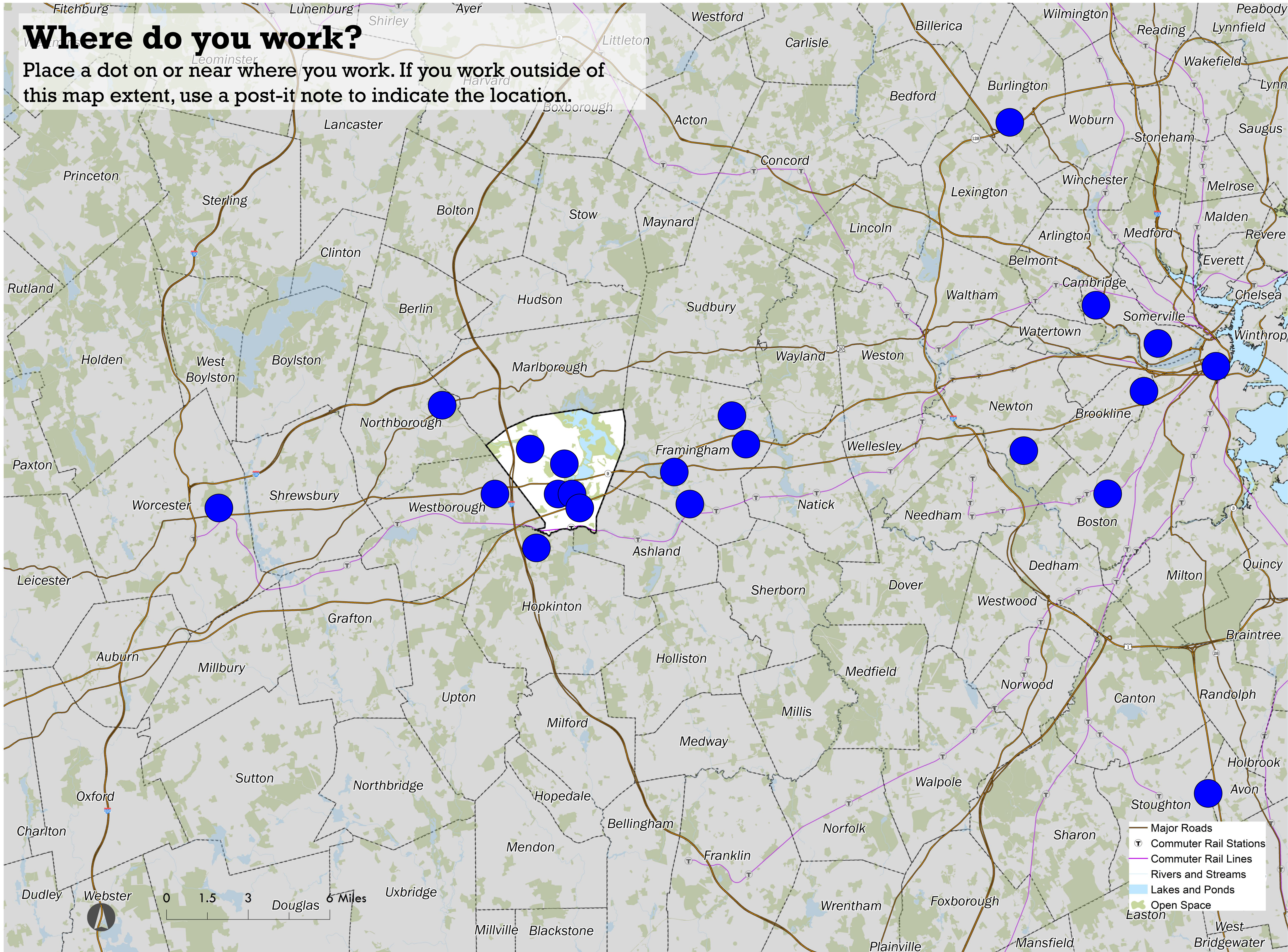
Where do you work?

Place a dot on or near where you work. If you work outside of this map extent, use a post-it note to indicate the location.

This map displays the Greater Boston area, including surrounding towns and cities. Blue dots are placed on the map to indicate where people work. The dots are concentrated in the central area, particularly around the white-shaded region, and are also scattered throughout the surrounding areas. The map includes a legend in the bottom right corner, a scale bar in miles (0, 1.5, 3, 6) in the bottom left, and a north arrow. The legend identifies Major Roads (brown lines), Commuter Rail Stations (T symbols), Commuter Rail Lines (purple lines), Rivers and Streams (blue lines), Lakes and Ponds (light blue areas), Open Space (green areas), and Easton (yellow area). The white-shaded area is located in the center of the map, covering parts of the towns of Framingham, Needham, and Boston.

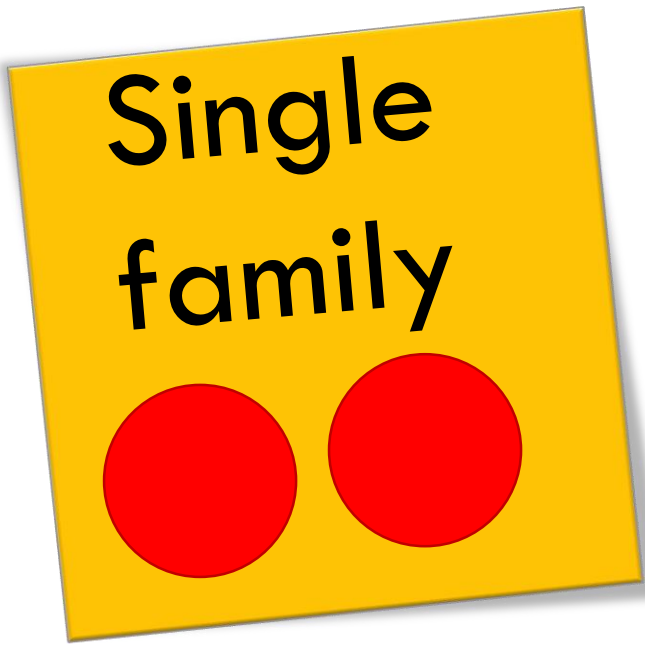
Legend:

- Major Roads
- Commuter Rail Stations
- Commuter Rail Lines
- Rivers and Streams
- Lakes and Ponds
- Open Space
- Easton



SOUTHBOROUGH Visioning

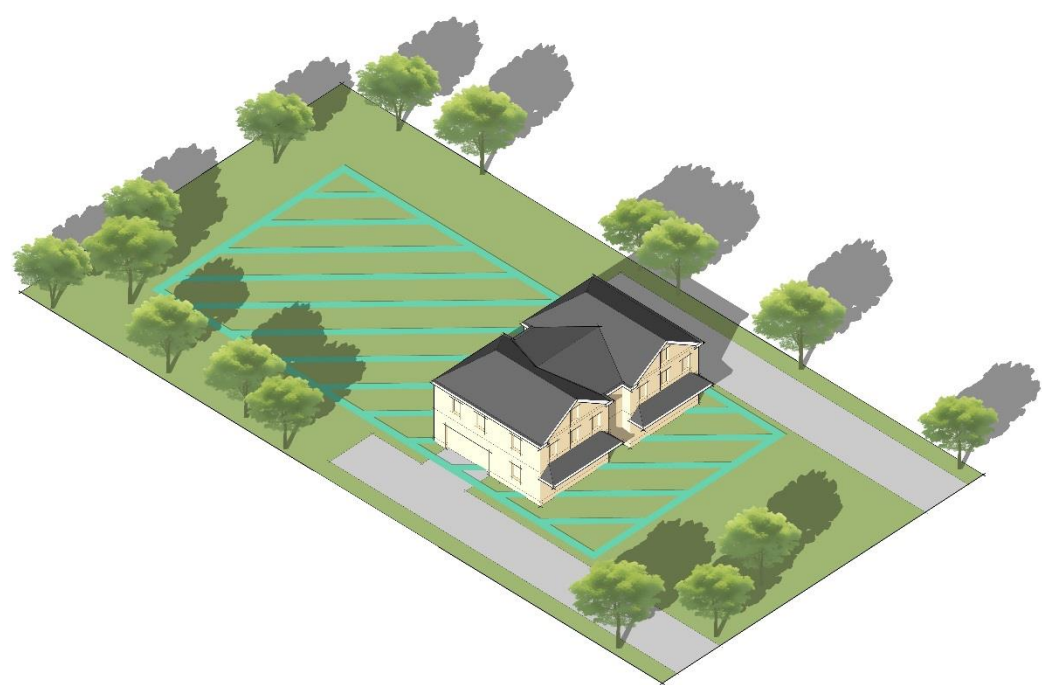
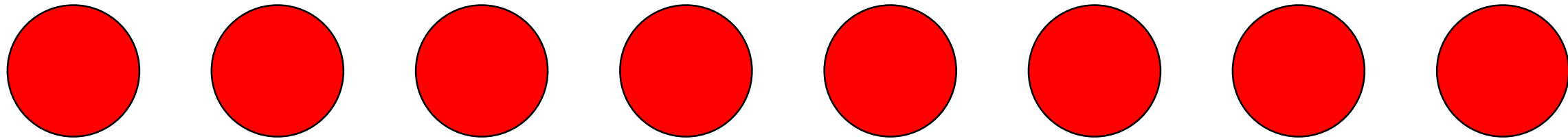
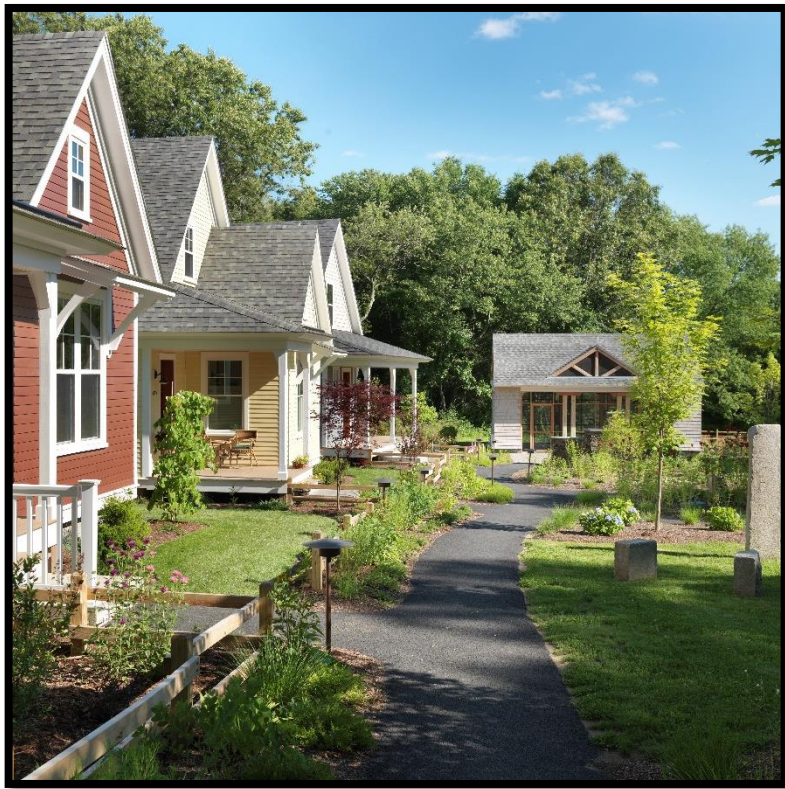
Please place a dot below the different housing types that you think are appropriate for Southborough. Use a post-it note to record specific comments.



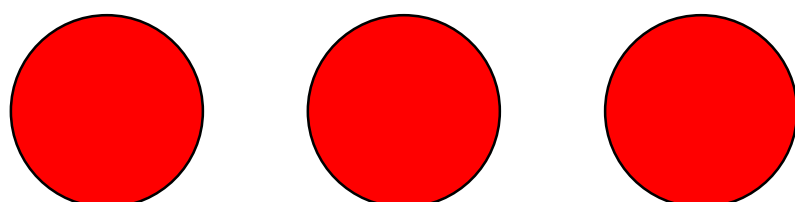
HOUSING



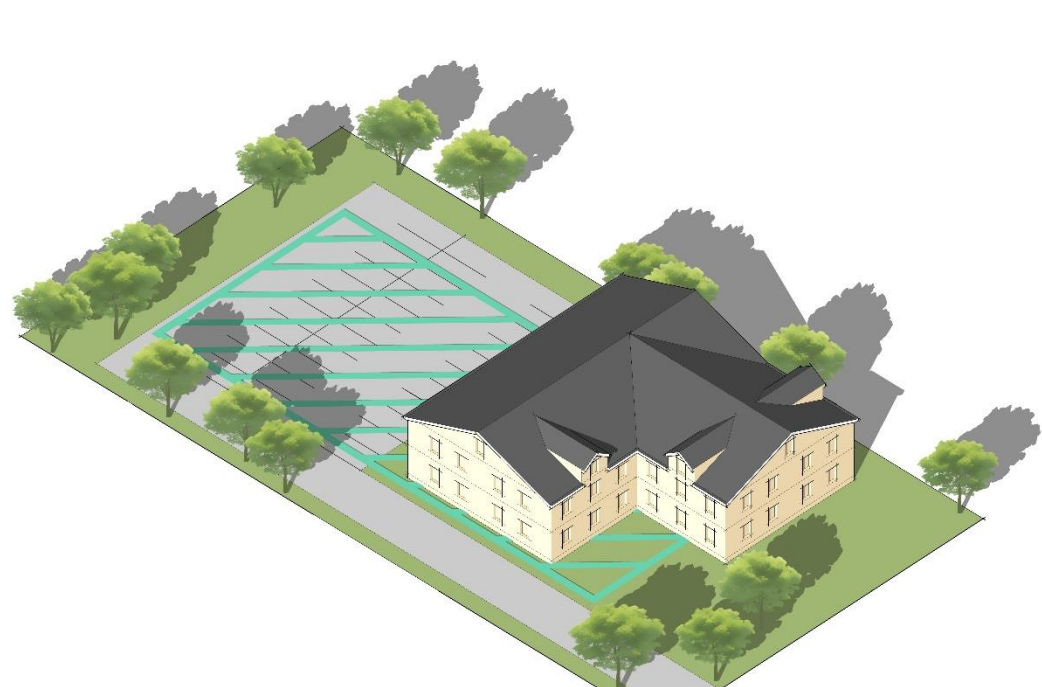
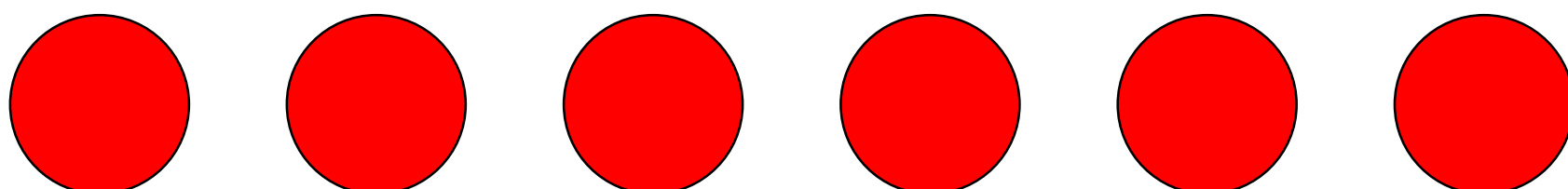
Clustered/Cottages



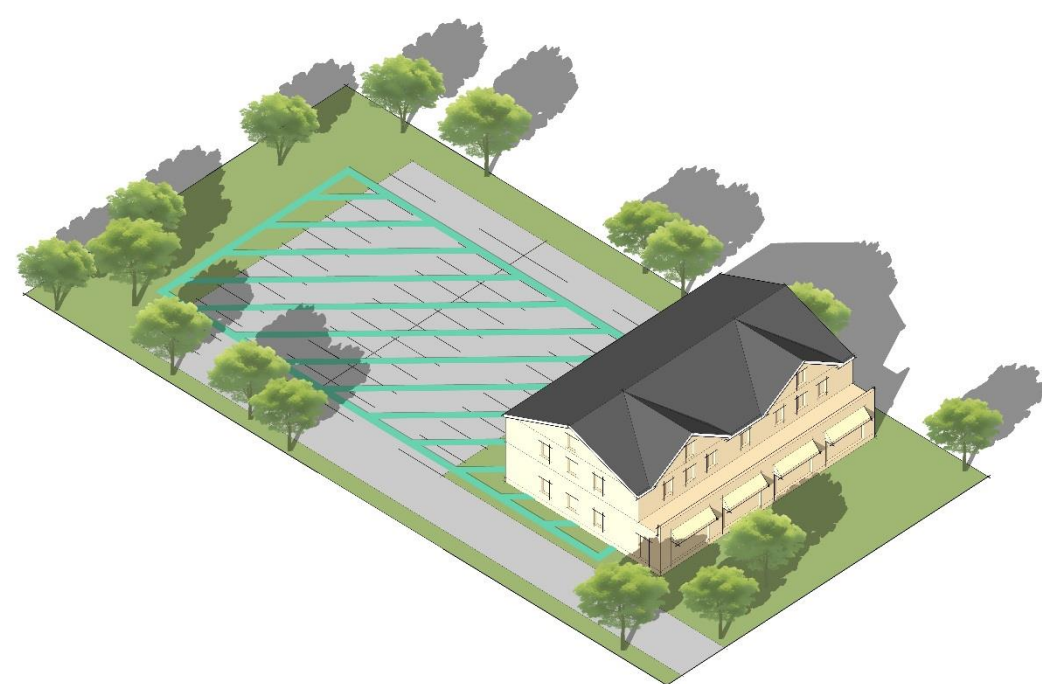
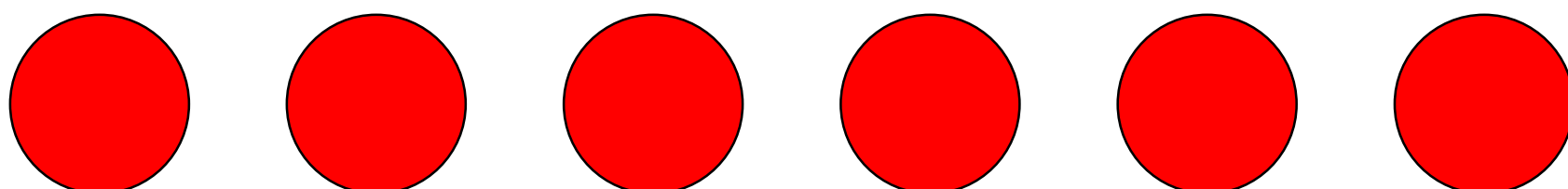
2 or 3 Family Homes



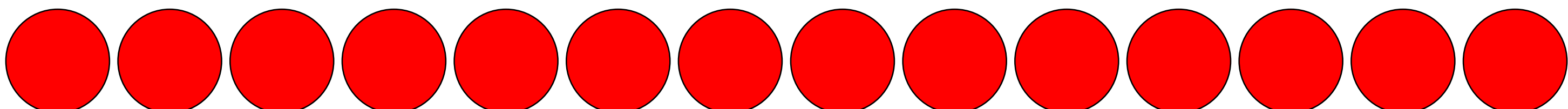
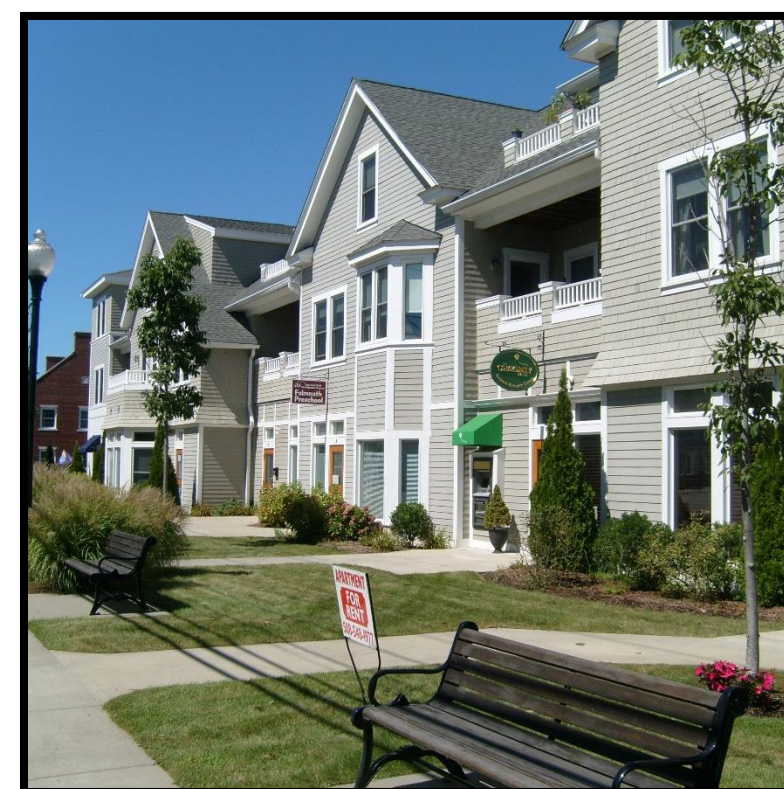
Townhouses



Multi-family Housing



Mixed-use Housing



Southborough Visioning



DOWNTOWN



What type of activities and development would you like to see in Downtown Southborough?

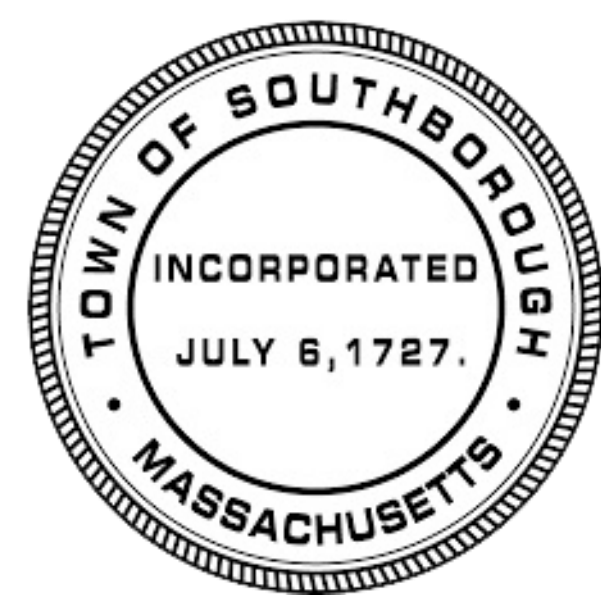
Place dots next to all you would support.

Retail & Dining	<div><div></div><div></div><div></div><div></div><div></div><div></div></div>	<div>Pub!</div>
Cultural Programming (e.g. music, arts)	<div><div></div><div></div></div>	
Multifamily Residential	<div><div></div><div></div></div>	
Mixed Use (Commercial & Residential)	<div><div></div><div></div><div></div><div></div><div></div><div></div><div></div><div></div><div></div></div>	
Other	<div><div></div><div></div><div></div><div></div></div>	<div>Community wide events</div> <div>Green space</div>

Note: The image above primarily highlights parcels zoned as part of the Business Village district, and does not necessarily represent the full extent of the village boundaries.

SOUTHBOROUGH

Visioning



FAYVILLE



What type of activities and development would you like to see in Fayville?

Place dots next to all you would support.

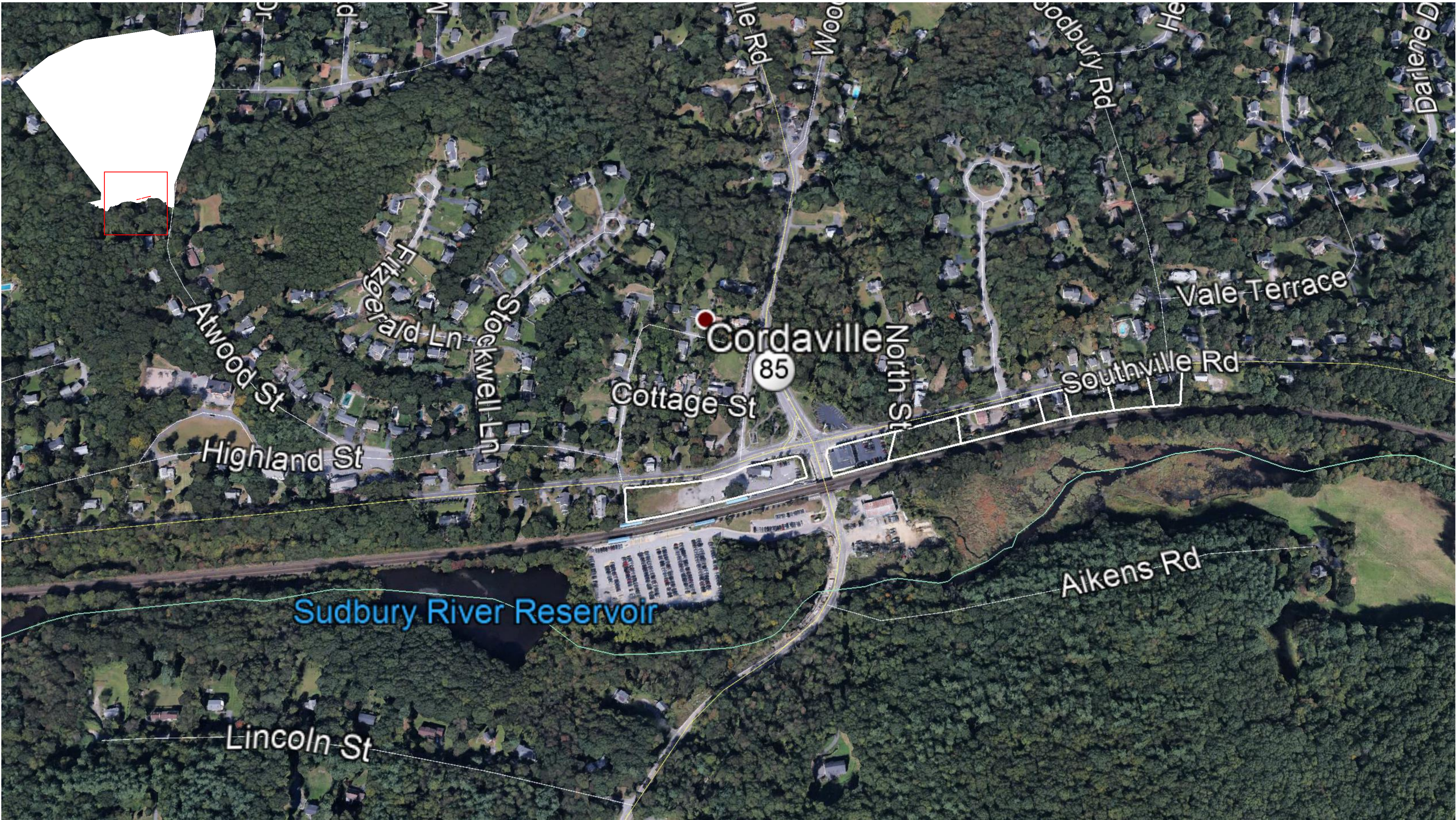
Retail & Dining	<div><div></div><div></div><div></div></div>
Cultural Programming (e.g. music, arts)	<div><div></div><div></div><div></div><div></div></div>
Multifamily Residential	<div><div></div><div></div><div></div><div></div></div>
Mixed Use (Commercial & Residential)	<div><div></div><div></div><div></div></div>
Other	<div><div></div><div><div></div><div></div><div></div><div></div><div></div></div><div></div></div>

Note: The image above primarily highlights parcels zoned as part of the Business Village district, and does not necessarily represent the full extent of the village boundaries.

Southborough Visioning



MBTA Station Area Cordaville and Southville



What type of activities and development would you like to see in Cordaville and Southville?

Place dots next to all you would support.

Retail & Dining	<div><div></div><div></div><div></div><div></div><div></div><div></div></div>
Cultural Programming (e.g. music, arts)	<div><div></div><div></div></div>
Multifamily Residential	<div><div></div><div></div><div></div></div>
Mixed Use (Commercial & Residential)	<div><div></div><div></div><div></div><div></div></div>
Other	<div><div></div><div></div><div></div></div>

Note: The image above primarily highlights parcels zoned as part of the Business Village district, and does not necessarily represent the full extent of the village boundaries.

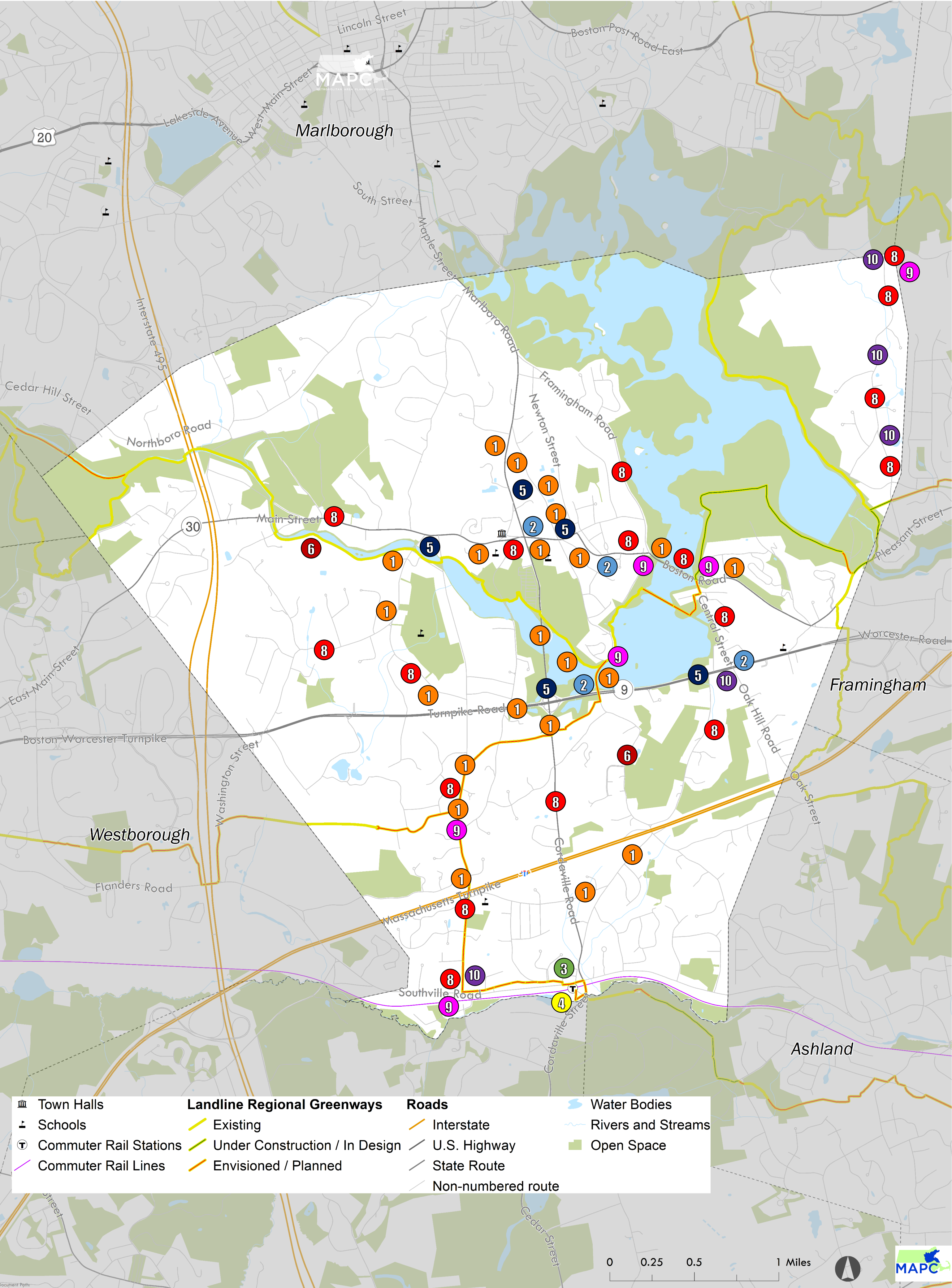
SOUTHBOROUGH Visioning



TRANSPORTATION

Directions:

On the map below, place a dot where you think a transportation issue exists. Label the dot with corresponding number to the issues at the right. For town-wide issues, write in your response in the box.



Pedestrian

- 1 Needs sidewalk
- 2 Dangerous crossing

Commuter Rail

- 3 Poor station access
- 4 Inadequate frequency

Bicycle

- 5 Needs bike facilities (e.g., bike lane)
- 6 Needs bike parking

Vehicles

- 7 Inadequate parking
- 8 High vehicular speeds
- 9 Dangerous intersection

- 10 Too much traffic

Other

- 11 Label other issue

Write-in general / Town-wide issues

- Oak Hill/Rt. 9 / Central → Need pedestrian bridge!
- Southville – speed
- Connect schools + neighborhoods to “downtown” with bike paths + pedestrian walkways
- Need public transport options from T-station
- Parking inadequate at train station
- Get local businesses to sponsor a bike-share

SOUTHBOROUGH Visioning



Directions:

What makes Southborough special to you? Place a dot next to a civic, natural, or cultural resource that is especially important to you.

UNIQUE COMMUNITY RESOURCES

